



*Multi-Position, Variable-Speed,
ECM-Based Air Handler
with Internal EEV
Communicating
2 to 5 Tons*

Contents

Nomenclature.....	2
Product Specifications.....	3
Dimensions	4
Airflow Data.....	5
Heat Kit Data.....	6
Wiring Diagram.....	8
Accessories	9

Product Features

- Electronic Expansion Valve (EEV) for cooling and heat pump applications.
- Variable-speed ECM blower motor
- Compatible with Daikin *One+* smart thermostat and other Daikin communicating equipment
- Provides constant CFM over a wide range of static pressure conditions independent of duct system
- CFM indicator
- Thermostat provides adjustable low CFM for efficient fan-only operation
- All-aluminum evaporator coil
- Fault recall of six most recent faults
- Improved humidity and comfort control
- AHRI certified; ETL listed
- Cabinet air leakage less than 2.0% at 1.0 inch H₂O when tested in accordance with ASHRAE standard 193
- Cabinet air leakage less than 1.4% at 0.5 inch H₂O when tested in accordance with ASHRAE standard 193
- 3 kW – 25 kW electric heater kits
- Horizontal or vertical configuration capabilities
- 21" depth for easier attic access
- DecaBDE-free thermoplastic drain pan with secondary drain connections
- Screw-less sides and back helps to reduce condensation when installed in humid locations
- Foil-faced insulation covers the internal casing to reduce cabinet condensation
- Galvanized, leather grain-embossed finish
- Glue-less cabinet insulation retention
- Tool-less filter access



* Complete warranty details available from your local dealer or at www.daikincomfort.com. To receive the 12-Year Parts Limited Warranty, online registration must be completed within 60 days of installation. Additional requirements for annual maintenance are required for the Unit Replacement Limited Warranty. Online registration and some of the additional requirements are not required in California or Quebec.

Nomenclature

	D	V	24
	1	2	3,4
Brand	D - Daikin Single-Piece Air Handler		
Unit Application	V - Multi-Position Variable-Speed Motor		
Nominal Capacity Range	25 - 2 Tons 37 - 3 Tons	59 - 4 Tons 61 - 5 Tons	
System Compatibility / Cabinet Finish (Painted)			
	F - Fit P - Non-Fit		
Expansion Device			
	E - Electronic Expansion Valve T - Thermal Expansion Valve		

	HKS	X
	1	2
Unit Type	HKS Heat Kit for Air Handlers	
Circuit Breaker	X No circuit breaker C Circuit Breaker	
Heating Capacity @ 240 Volts		
03	3.0 kW	15 14.4 kW
05	4.5 kW	19 19.2 kW wth
06	6.0 kW	20 19.2 kW wit
08	8.0 kW	25 25.0 kW
10	9.6 kW	

Product Specifications

	DV25PEC B14A*	DV37PEC C14A*	DV59PEC D14A*	DV61PEC D14A*
Nominal Ratings				
Cooling (BTU/h)	24,000	36,000	48,000	60,000
Blower				
Diameter	10 $\frac{5}{8}$ "	10 $\frac{5}{8}$ "	11 $\frac{5}{8}$ "	11 $\frac{5}{8}$ "
Width	6"	10 $\frac{5}{8}$ "	10 $\frac{5}{8}$ "	10 $\frac{5}{8}$ "
Coil Connections				
Liquid	$\frac{3}{8}$ "	$\frac{3}{8}$ "	$\frac{3}{8}$ "	$\frac{3}{8}$ "
Suction	$\frac{3}{4}$ "	$\frac{7}{8}$ "	$\frac{7}{8}$ "	$\frac{7}{8}$ "
Coil Drain Connection (FPT)	$\frac{3}{4}$ "	$\frac{3}{4}$ "	$\frac{3}{4}$ "	$\frac{3}{4}$ "
Electrical Data				
Voltage	208/240	208/240	208/240	208/240
Electric Heat Capacity (kW)	3, 5, 6, 8, 10	5, 6, 8, 10, 15, 19	5, 6, 8, 10, 15, 20	5, 6, 8, 10, 15, 20, 25
Min Circuit Ampacity	4.9/4.9	6.5/6.5	8.6/8.6	8.6/8.6
Max. Overcurrent Device (Amps)	15/15	15/15	15/15	15/15
Minimum VAC	197	197	197	197
Maximum VAC	253	253	253	253
Blower Motor				
Full Load Amps (FLA)	3.9	5.2	6.9	6.9
Horsepower (HP)	$\frac{1}{2}$	$\frac{3}{4}$	1	1
Ship Weight (Lbs.)	115	140	150	167

N
o
t
e
:
M
i
n
i
m
u
m
C
i
r
c
u

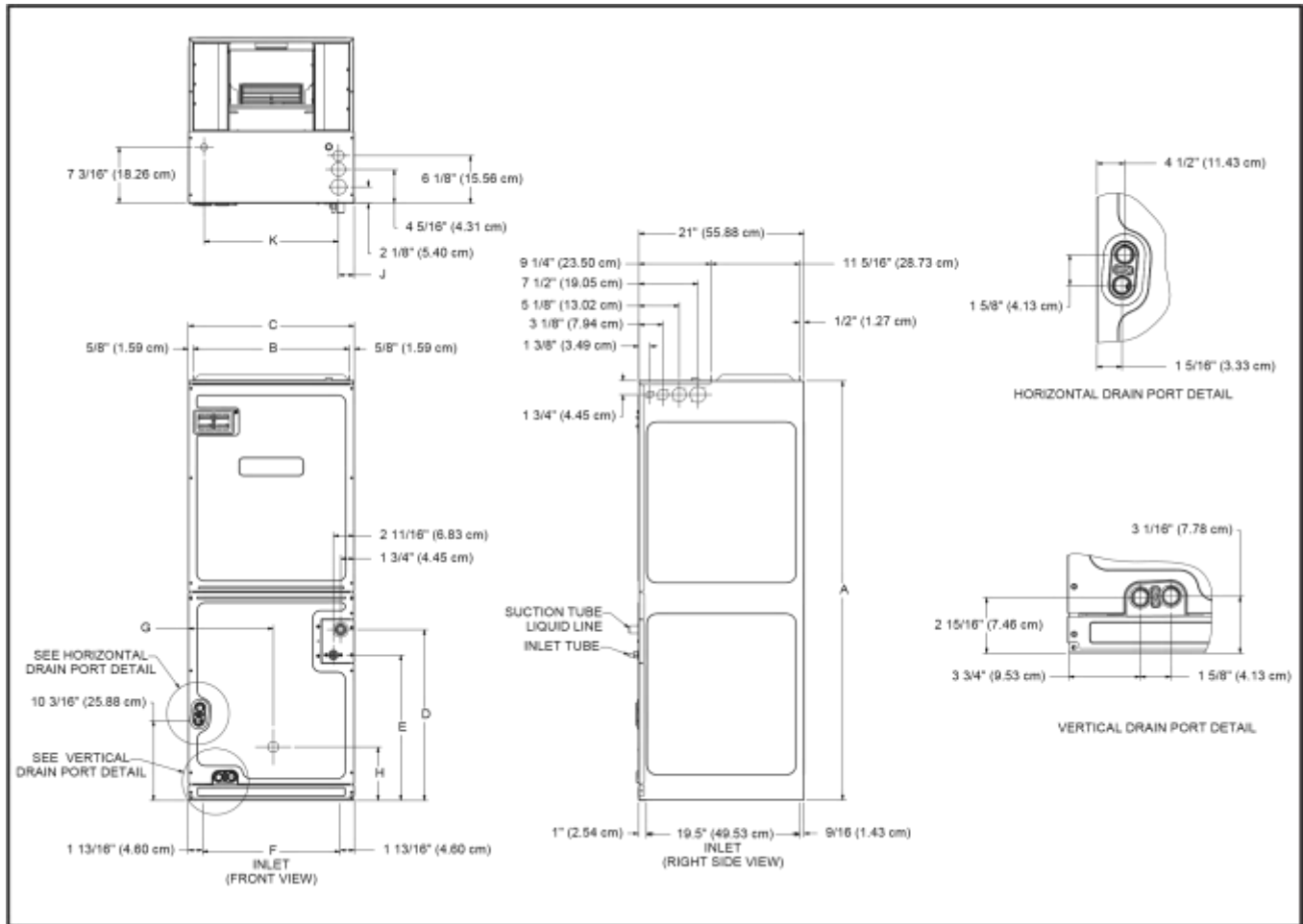
i
t
A
m
p
a
c
i
t
y
(
M
C
A
)
a
n
d
M
a
x
i
m
u
m
O
v
e
r
c
u
r
r
e
n
t
P
r
o
t
e
c
t
i
o
n
(
M
O
P
)
f
o
r
b
l
o
w
e
r
w
i
t
h
o
u

t
s
u
p
p
l
e
m
e
n
t
a
l

h
e
a
t
i
n
s
t
a
l
l
e
d
.
R
e
f
e
r
t
o
u
n
i
t
n
a
m
e
p
l
a
t
e
a
n
d
/
o
r
H
e
a
t
K
i
t
D
a
t
a
f

o
r
s
p
e
c
i
f
i
c
a
t
i
o
n
w
i
t
h
a
p
p
r
o
v
e
d
a
c
c
e
s
s
o
r
y
h
e
a
t
e
r
s
i
n
s
t
a
l
l
e
d
.

Dimensions



Model	A	B	C	D	E	F	G	H
DV25PECB14	$53 \frac{7}{16}$	$16 \frac{5}{8}$	$17 \frac{1}{2}$	20	$21 \frac{1}{2}$	$14 \frac{5}{8}$	$9 \frac{5}{8}$	$7 \frac{5}{8}$
DV37PECC14	$53 \frac{7}{16}$	$19 \frac{5}{8}$	21	$21 \frac{13}{16}$	$18 \frac{5}{8}$	$17 \frac{11}{16}$	$10 \frac{13}{16}$	$6 \frac{13}{16}$
DV59PECD14	$53 \frac{7}{16}$	$23 \frac{5}{16}$	$24 \frac{1}{2}$	$21 \frac{1}{2}$	$18 \frac{5}{16}$	$21 \frac{3}{16}$	$12 \frac{5}{8}$	$6 \frac{3}{8}$
DV61PECD14	58	$23 \frac{5}{16}$	$24 \frac{1}{2}$	$26 \frac{5}{8}$	$22 \frac{5}{8}$	$21 \frac{3}{16}$	$12 \frac{5}{16}$	$25 \frac{5}{8}$

Airflow Data

Model	Rated Air flow CFM								
	0.1	0.2	0.3	0.4	0.5	0.6	0.7	0.8	0.9

DV25PECB14A*	700	690
DV37PECC14A*	1190	1170
DV59PECD14A*	1445	1440
DV61PECD14A*	1645	1640
Model		
	0.1	0.2
DV25PECB14A*	770	760
DV37PECC14A*	1310	1285
DV59PECD14A*	1590	1585
DV61PECD14A*	1810	1805

Note:

- The chart is for information only. For satisfactory operation, external static pressure must not exceed value shown on rating plate.
- Use the CFM adjustment factors of .98 for horizontal left, .95 for horizontal right & .96 for downflow orientations.
- Airflow data indicated is at 230V without air filter in place.

Heat Kit Data

Models		Circuit 1			Circuit 2			Single-Point Kit	
		Amps	MCA ¹	MOP ²	Amps	MCA ¹	MOP ²	MCA ¹	MOP ²
DV25PECB14AC		0.0/0.0	4.9/4.9	15/15	---	---	---	---	---
HKSX03XC - 208 V	No Breaker	10.8	18	20	---	----	-----	-----	---
HKSX05XC - 208 V		17.3	27	30	----	---	-	---	---
HKSX06XC - 208 V		21.7	32	35	---	---	---	---	---
HKSX08XC - 208 V		28.9	41	45	---	---	---	---	---
HKSX10XC - 208 V		34.7	48	50	---	---	---	---	---
HKSC05XC - 208 V	Breaker	17.3	27	30	---	---	---	---	---
HKSC08XC - 208 V		28.9	41	45	---	---	---	---	---
HKSC10XC - 208 V		34.7	48	50	---	---	---	---	---
HKSX03XC - 240 V	No Breaker	12.5	21	25	---	----	-----	-----	---
HKSX05XC - 240 V		20.0	30	30	---	---	-	---	----
HKSX06XC - 240 V		25	36	40	---	---	---	---	---
HKSX08XC - 240 V		33.3	47	50	---	---	---	---	---
HKSX10XC - 240 V		40.0	55	60	---	---	---	---	---
HKSC05XC - 240 V	Breaker	20.0	30	30	---	---	---	---	---
HKSC08XC - 240 V		33.3	47	50	---	---	---	---	---
HKSC10XC - 240 V		40.0	55	60	---	---	---	---	---
DV37PECC14AC		0.0/0.0	6.5/6.5	15/15	---	---	---	---	---
HKSX05XC - 208 V	No Breaker	17.3	28	30	---	---	---	---	---
HKSX06XC - 208 V		21.7	34	35	---	---	---	---	---
HKSX08XC - 208 V		28.9	43	45	---	---	---	---	---
HKSX10XC - 208 V		34.7	50	50	---	---	---	---	---
HKSC05XC - 208 V	Breaker	17.3	28	30	----	---	-----	---	---
HKSC08XC - 208 V		28.9	43	45	---	----	-	-----	---
HKSC10XC - 208 V		34.7	50	50	---	---	---	---	---
HKSC15XA - 208 V		34.7	49.8	50	17.3	21.7	25	71.5	80
HKSC19CA - 208 V		34.7	49.8	50	34.7	43.3	45	93.2	100
HKSC15XF - 208 V ^		0.0	6.5	15	30	38	40	---	---
HKSX05XC - 240 V	No Breaker	20	32	35	---	---	---	---	---
HKSX06XC - 240 V		25	38	40	---	---	---	---	---
HKSX08XC - 240 V		33.3	48	50	---	---	---	---	---
HKSX10XC - 240 V		40	57	60	---	---	---	---	---

HKSC05XC - 240 V HKSC08XC - 240 V HKSC10XC - 240 V HKSC15XB - 240 V HKSC19CB - 240 V HKSC15XF - 240 V ^	Breaker	3
DV59PECD14AC		0.0
HKSX05XC - 208 V HKSX06XC - 208 V HKSX08XC - 208 V HKSX10XC - 208 V	No Breaker	1 2 2 3
HKSC05XC - 208 V HKSC08XC - 208 V HKSC10XC - 208 V HKSC15XB ³ - 208 V HKSC20DH - 208 V HKSC15XF - 208 V ^	Breaker	1 2 3 3 3 0
Models		A
HKSX05XC - 240 V HKSX06XC - 240 V HKSX08XC - 240 V HKSX10XC - 240 V	No Breaker	3
HKSC05XC - 240 V HKSC08XC - 240 V HKSC10XC - 240 V HKSC15XB - 240 V HKSC20DB - 240 V HKSC15XF - 240 V ^	Breaker	3
DV61PECD14AC		0.0
HKSX05XC - 208 V HKSX06XC - 208 V HKSX08XC - 208 V HKSX10XC - 208 V	No Breaker	1 2 2 3

HKSC05XC - 208 V	Breaker	17.3	30.3	35	---	---	---	---	----
HKSC08XC - 208 V		28.9	45	45	---	---	---	---	---
HKSC10XC - 208 V		34.7	52	60	---	---	---	---	80
HKSC15XB ³ - 208 V		34.7	52	60	17.3	21.7	25	73.6	100
HKSC20DH - 208 V		34.7	52	60	34.7	43.3	45	95.3	125
HKSC25DA - 208 V		52	73.6	80	35	43.3	45	117	---
HKSC15XF - 208 V ^		0.0	8.6	15	30	38	40	---	---
HKSC20XF - 208 V ^		0.0	8.6	15	38	47	50	---	---
HKSX05XC - 240 V	No Breaker	20	34	35	---	---	---	---	---
HKSX06XC - 240 V		25	40	40	---	---	---	---	---
HKSX08XC - 240 V		33.3	50.3	60	---	---	---	---	---
HKSX10XC - 240 V		40	59	60	---	---	---	---	---
HKSC05XC - 240 V	Breaker	20	34	35	---	----	----	---	---
HKSC08XC - 240 V		33.3	50.3	60	---	--	--	---	---
HKSC10XC - 240 V		40	59	60	---	25	25	---	---
HKSC15XB - 240 V		40	58.6	60	20	50	50	83.6	90
HKSC20DB - 240 V		40	58.6	60	40			109	110
HKSC25DB - 240 V		60	83.6	90	40	50	50	134	150
HKSC15XF - 240 V ^		0.0	8.6	15	34.6	43	45	---	---
HKSC20XF - 240 V ^		0.0	8.6	15	43.3	54	60	---	---

¹ Minimum Circuit Ampacity (Heater Amps + Motor Amps) X 1.25 --- indicates Not Required

² Maximum Overcurrent Protection = 2.25 X Motor Amps + Heater Amps

³ Notation is correct as XB because technically the 240V heater kit application can be used here without any issues.

^
Three
-
phase
Heater
Kits
(Circuit 1:
Single
-
phase
for
Air
Handlers
Circuit 2:
Three
-
phase
for
Heater
Kits)
Note:
The

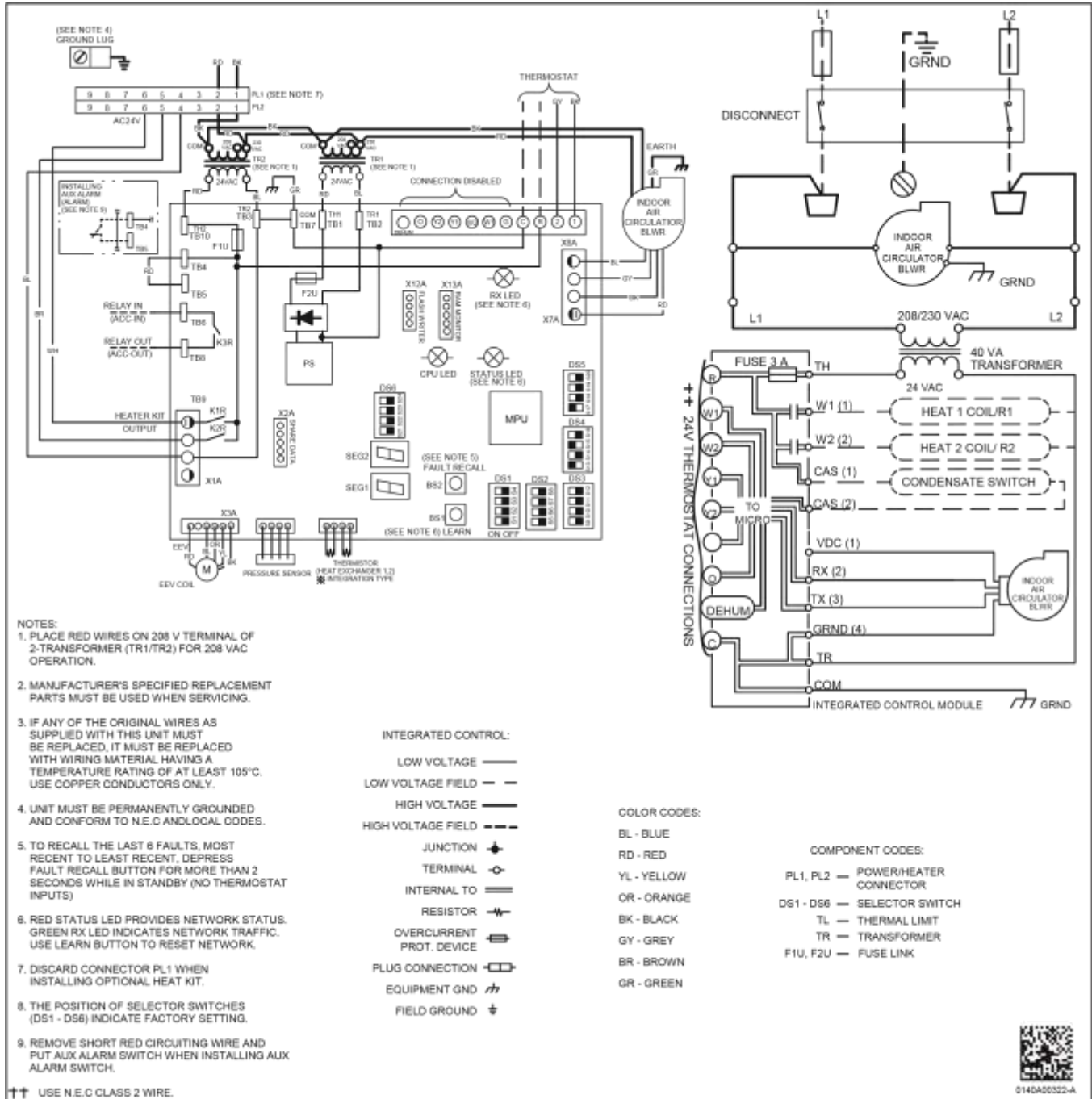
208
or
240
in the
heat
kit
part
numb
er
field
is for
clarifi
catio
n of
the
nomi
nal
volta
ge for
this
mode
l.

*Heating kW Correction
Factor*

Supply Voltage	240	230
Correction Factor	1.00	0.92

Multiply the 240-volt heating capacity by correction factors.

Wiring Diagram



Wiring is subject to change. Always refer to the wiring diagram on the unit for the most up-to-date wiring.

Accessories

Downflow Kits Drain Port Plug

SS-DVPEC
www.daikincomfort.com

Warning

High Voltage: Disconnect all power before servicing or installing this unit. Multiple power sources may be present. Failure to do so may cause property damage, personal injury, or death.



0140A00322-A

Kit Number	Description	Application
DPK1	Side Drain Port Plug	All Models

DFK-B	DFK-C
DV25PECB14**	DV37PECC14**

*Condensate Management Kits**

CMK0008	CMK0009
DV25PECB14**	DV37PECC14**

*
F
o
r
H
o
r
i
z
o
n
t
a
l
a
p
p
l
i
c
a
t
i
o
n
o
n
l
y
.

MERV 15 Air Cleaners

Chassis	Daikin Premium Air Cleaner
B	DV15-2117-AB
C	DV15-2121-AC
D	DV15-2124-AD

Permanent 1" Filters

Chassis	Part#
B	ALFH16201E
C	ALFH1912201E

D	ALFH20231E	23.0" x 20.0"
---	------------	---------------

*Single Point Kit ***

Model	HKR-15C	HKR-20C	HKR-21C
SPW-01			

*
*
M
u
s
t
b
e
i
n
s
t
a
l
l
e
d
a
l
o
n
g
w
i
t
h
a
n
y
o
f
t
h
e
a
b
o
v
e
c
o
m
p
a
t
i
b
l
e
h
e
a
t
k
i
t
s
.
T
h
i
s
k

i
t
w
i
l
l
f
i
t
a
n
y
D
V
P
T
C
a
i
r
h
a
n
d
l
e
r
a
s

l
o
n
g
a
s
a
c
c
o
m
p
a
t
i
b
l
e
h
e
a
t
k
i
t
i
s
i
n
s
t
a
l
l
e
d
i
n
t
h
e
u
n

i
t
.

*15" Single Lamp UV
Coil Purifier*

Model	Lamp	Power Mod	Rem Cord
UC18S15-24	UCP-16013	UCP-16015	UCP-16016
UC18S15-24B	UCP-16012	UCP-16014	UCP-16016

Notes

Notes

